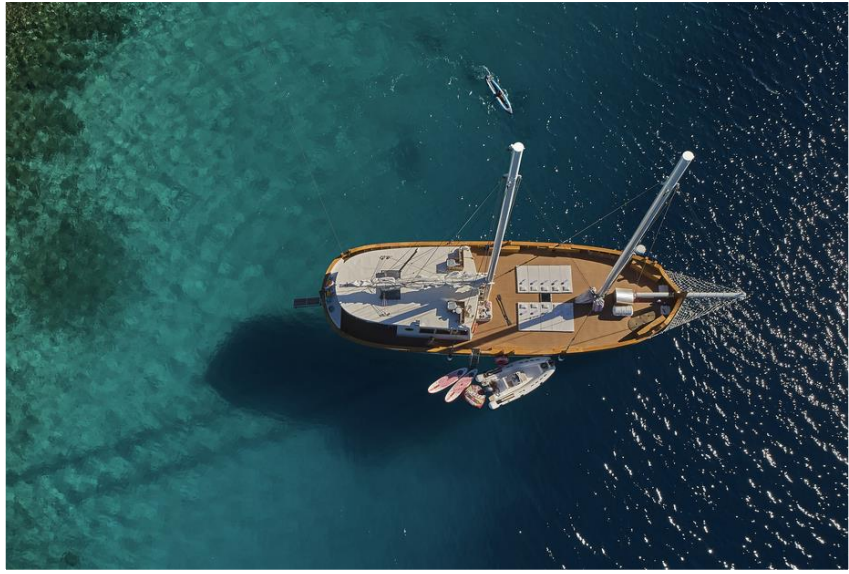




ARDURA

Built: 2019, Croatia

LOA: 27,65 m • Beam: 7,8 m • 12 guests • 6 cabins • 4 crew



MSY ARDURA

Built and started with charters in 2019; MSY Ardura accommodates up to 12 guests in 6 en-suite cabins; 2 double bed cabins and 4 cabins with convertible beds. Distinguish exterior originates from *trabakul* - Croatian traditional wooden merchant boat (15th century).

GENERAL

LOA: 27,65 m
LOD: 23,95 m
Beam: 7,80 m
Draft: 3,10 m
Built: 2019, Croatia
Hull construction: Steel
Deck Material: Epoxy teak
Engines: 2 x re 200 HP John Deere
Generators: 2 x 25 kW John Deere
Cruising speed: 8 kts
Maximum speed: 12 kts
Electricity: 12 V / 24 V / 220 V
Crew: 4
Cruising area: Adriatic sea

ACCOMMODATION

12 guests in 6 en-suite cabins; 2 double bed and 4 convertible bed cabins

AMENITIES

Interior: TV and DVD player in salon, TV in each cabin, music system and A/C throughout the yacht, Wi-Fi internet

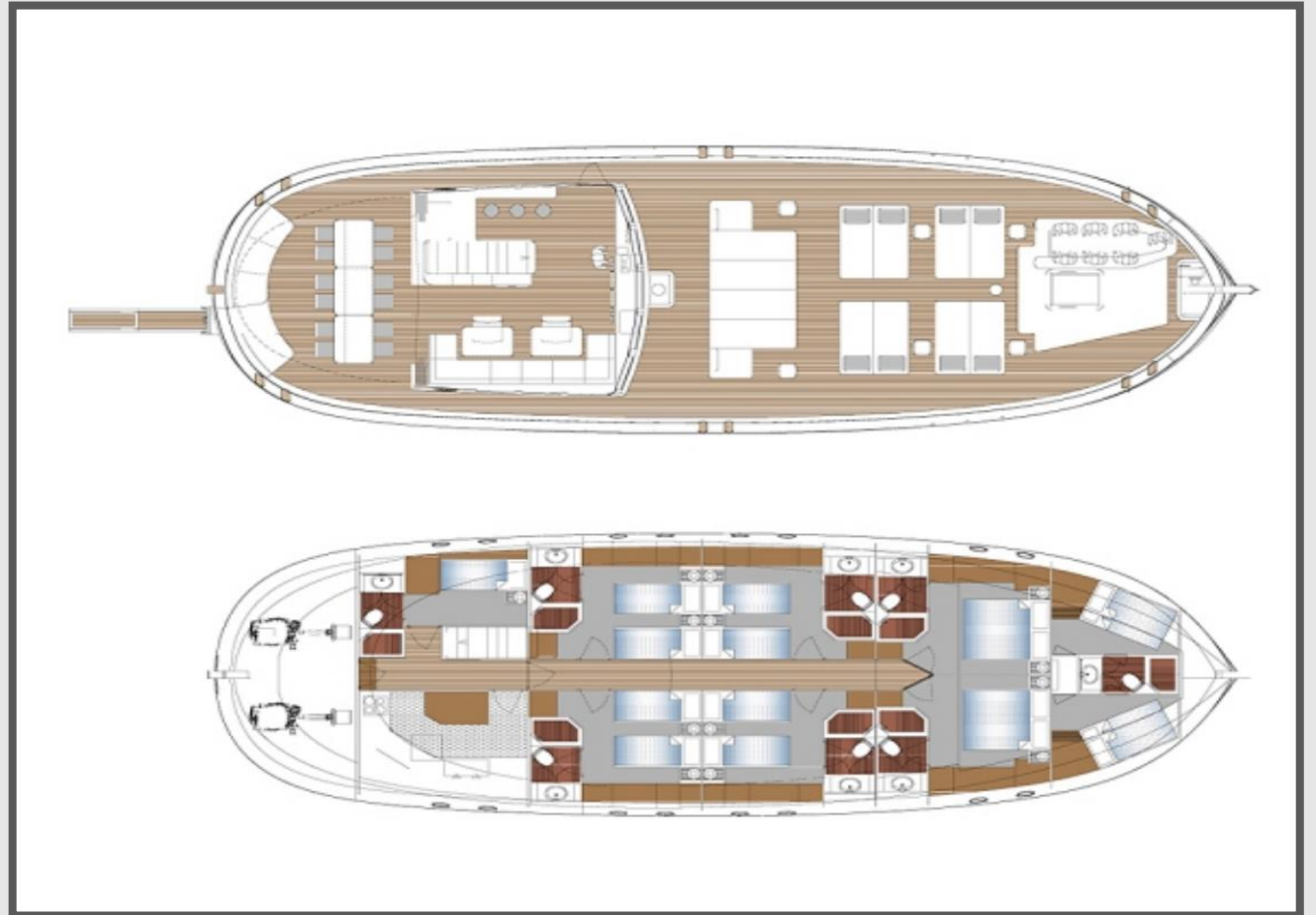
Main deck: sunbathing and lounge area up front, al fresco dining area completed with cushioned section on the aft

TENDER

5,20m with Yamaha 60hp

WATER TOYS

Underwater scooter, water ski (adults), wakeboard play (Waketec)
2x stand up paddle boards, 2x kayak for 2pax, 2x ringo, snorkeling equipment





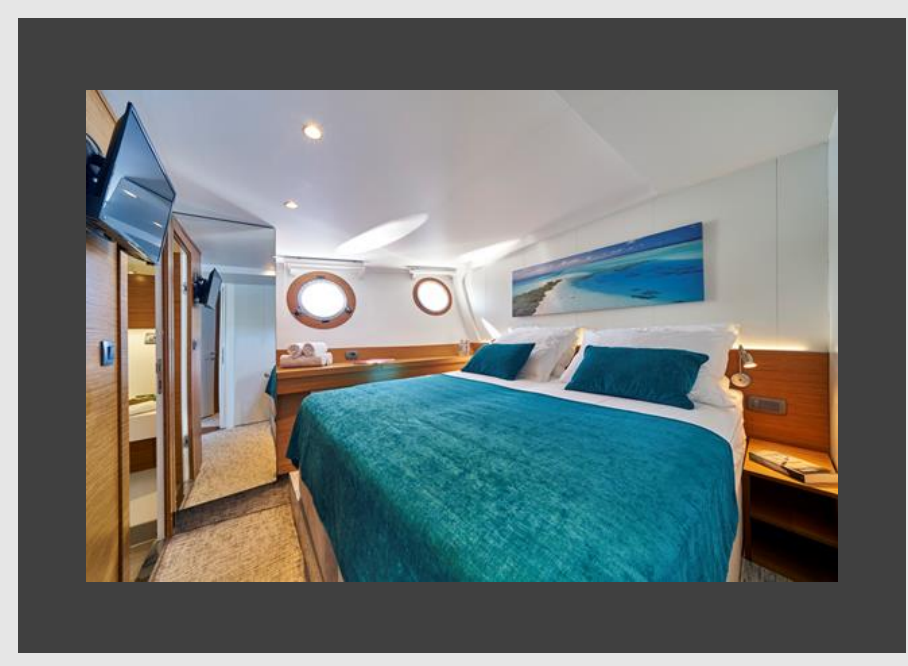
Aft: al fresco dining area and cushioned side-to-side lounge section in the back



Steering position in the front part of the airy salon



Interior dining/lounge area faces TV and bar





Front deck /sunbathing area; more features in upcoming season; more comfort & more choices where to relax and enjoy.

MSY ARDURA

Key features

- brand new 27m charter yacht (2019);
- completed 6 charters in 2019;
- takes 12 guests in 6 en-suite cabins;
- matches accommodation requirements of any group having 4 cabins with convertible beds;
- delightful local crew of 4, knowledgeable of the area, fluent in English, attentive and welcoming

